

CLIFF

SLIDER KNOBS

Ten different designs are produced. 3 types have option of 4mm. 6/8mm shaft fitting. All knobs have matt non reflective finish to match our K9-K12 series and C18. Standard colour - Black. Electrically conductive models available.

CS1 Length 23mm. Width 11mm. Height 11mm. An electrically conductive version is available.



CS1 - Shaft 6/8mm

CP3155 - Black
CP3160 - Blue
CP3165 - Green
CP3170 - Grey
CP3175 - Red
CP3180 - White
CP3185 - Yellow

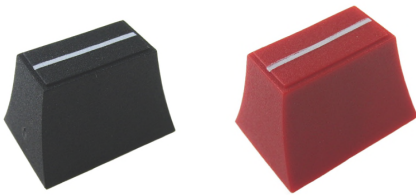
CS1A - Shaft 4mm

CP3260 - Black
CP3265 - Blue
CP3270 - Green
CP3272 - Grey
CP3275 - Red
CP3280 - White

CS1B - Shaft 4mm

CP3261 - Black
CP3273 - Grey
CP3276 - Red

CS2 Length 20mm. Width 14mm. Height 13mm.



CS2 - Shaft 6/8mm

CP3190 - Black

CS2A - Shaft 4mm

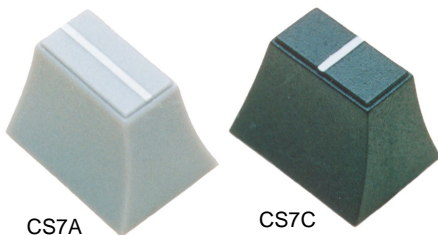
CP3250 - Black

CS2B - Shaft 4mm

CP3193 - Black

CP3195 - Red

CS7 Length 12mm. Width 9mm. Height 9mm.



CS7A

CS7C

CS7A - Shaft 4mm Parallel marker line

CP3290 - Black with White ML

CP3295 - Grey with White ML

CP3296 - Grey with Black ML

CP3300 - White with Black ML

CS7C - Shaft 4mm 90° marker line

CP3301 - Black with White ML

CP33041 - Grey with White ML

CP33043 - Anthracite Grey with White ML

CS8 Length 17mm. Width 10mm. Height 8mm.



CS8 - Shaft 6/8mm

CP3305 - Black

CP3320 - Red

CP3325 - White

For further information, contact sales@cliffuk.co.uk

© CLIFF 07/16 ISS.1

Cliff Electronic Components Limited,
76 Holmethorpe Avenue, Holmethorpe Ind. Estate,
Redhill, Surrey RH1 2PF U.K.
Tel: +44 (0)1737 771375 Fax: +44 (0)1737 766012



Visit us online at:

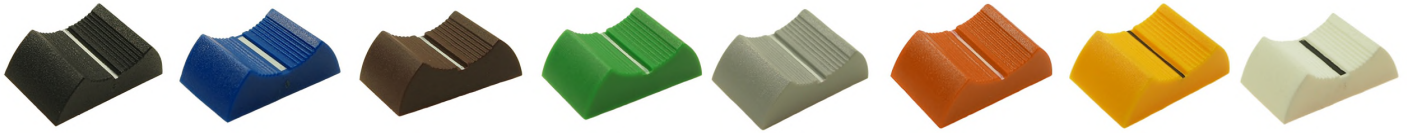


www.cliffuk.co.uk

CLIFF

SLIDER KNOBS

CS9 Length 27mm. Width 16mm. Height 7mm. An electrically conductive version is available.



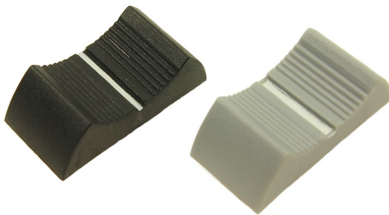
CS9 - Shaft 6/8mm

- CP3335 - Black
- CP3340 - Blue
- CP3345 - Brown
- CP3350 - Green
- CP3355 - Grey
- CP3357 - Orange
- CP3360 - Red
- CP3365 - White
- CP3370 - Yellow

CS9A - Shaft 4mm

- CP33350 - Black
- CP3341 - Blue
- CP3346 - Brown
- CP3351 - Green
- CP3356 - Grey
- CP3358 - Orange
- CP3361 - Red
- CP33650 - White
- CP3371 - Yellow

CS10 Length 27mm. Width 13mm. Height 8mm. An electrically conductive version is available.



CS10 - Shaft 6/8mm

- CP3375 - Black
- CP33764 - Grey with White ML
- CP33765 - Grey with Black ML
- CP33766 - Red
- CP3377 - White

CS10R Length 26mm. Width 12mm. Height 10mm.
Soft-touch finish.



CS10R - Shaft 4mm

- FC72621 - Black with moulded white marker line
- FC72622 - Black with moulded red marker line
- FC72623 - Black with moulded blue marker line
- FC72624 - Black with moulded green marker line
- FC72625 - Black with moulded yellow marker line
- FC72626 - Black with moulded grey marker line

CS11 Diameter 8mm. Height 8mm.
Designed to fit a square shaft of push-button switches and 4mm or 6mm slider shafts.



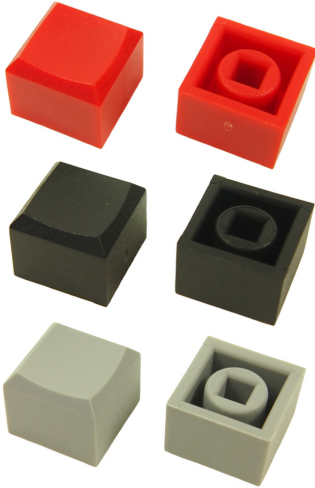
CS11

- CP3400 - Black
- CP3405 - White
- CP3410 - Grey
- CP3411 - Red

CLIFF

SLIDER KNOBS

CS12 Length 12.2mm. Width 12.2mm. Height 10mm. Designed to fit a 3.3mm shaft of push-button switches.



CS12 - Shaft 3.3mm

- CP3427 - Grey
- CP3431 - Red
- CP3433 - Black
- CP3435 - Opaque

CS12F - Shaft 3x2mm

- CP3428 - Grey

CS13 Length 26mm. Width 11mm. Height 10mm.
Conductive version available in black ONLY. Surface resistivity 10^3 Ohms/SQ.
Non conductive version is available in black as standard. Other colours available subject to minimum order quantities.

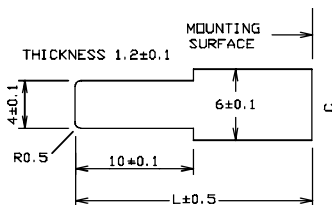


CS13 - Shaft 18.5x1.3mm

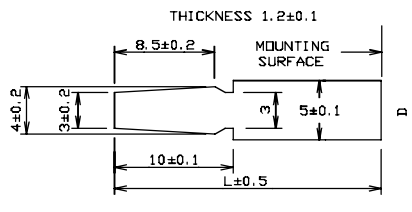
- CP343601 - T-Bar Slider without marker line
- CP343602 - T-Bar Slider with marker line
- CP343611 - Conductive T-Bar Slider without marker line
- CP343612 - Conductive T-Bar Slider with marker line

Shaft Details (Typical)

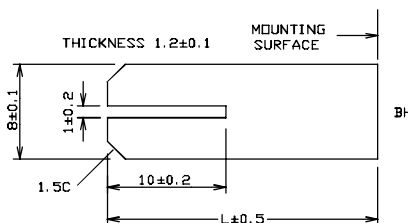
4mm TYPE 'A' (std)



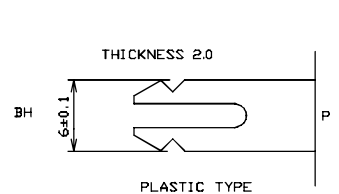
4mm TYPE 'B' (special)



8mm TYPE



6mm TYPE



For further information, contact sales@cliffuk.co.uk

Cliff Electronic Components Limited,
76 Holmethorpe Avenue, Holmethorpe Ind. Estate,
Redhill, Surrey RH1 2PF U.K.
Tel: +44 (0)1737 771375 Fax: +44 (0)1737 766012



Visit us online at: www.cliffuk.co.uk