

CLIFF

MS Series Unfused Power Input & Output Connectors



MS1-S



MS1-S/Y/RF



MS1-A



MS2-A



MS1X/S



MS1-PCA



MR1-S



MR1-SBN



PVC Insulating Cover

The **CLIFF**® range of MS series Power input and Output connectors are produced from heat resistant plastic with solid brass nickel-plated metal parts. Parts for soldering are tin plated. Three terminal options are available – Solder Tag, Quick Connect and PC mounting. All products are produced in accordance to IEC320 / EN60-320 and have various safety approvals. The standard colour is Black, however some products are available in other colours, subject to a reasonable order quantity.

Cliff Electronic Components, Ltd.
76 Holmethorpe Avenue, Holmethorpe Ind. Est.
Redhill, Surrey RH1 2PF. England
Tel: +44 (0) 1737 771375
Fax: +44 (0) 1737 766012
Email: sales@cliffuk.co.uk



Visit us online at:

www.cliffuk.co.uk

CLIFF

MS Series Unfused Power Input & Output Connectors



MS1-S IEC Power Input Socket. Rated 10A / 250VAC (USA 15A / 250VAC). Approved ENEC17 for all EC countries.

**MS1-S (CL1920)
MS1S-Y (CL1920Y)**

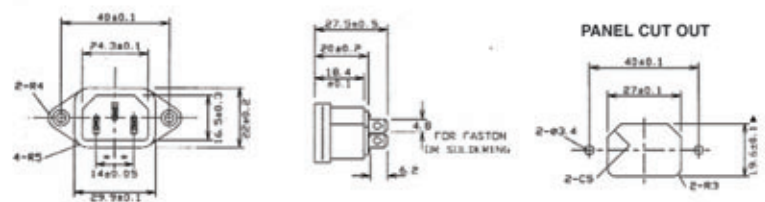


Y version has Rounded Locking Face.



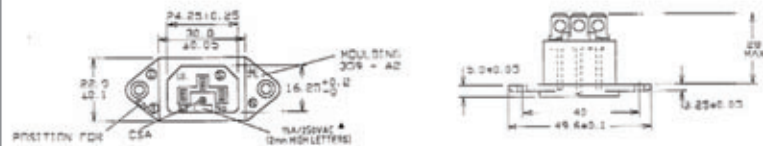
MS1-S/Y/RF IEC Power Input Socket. Rated 15A / 250VAC (USA 15A / 250VAC). Approved ENEC17 for all EC countries.

MS1-S/Y (CL1920RF)



MS1-A IEC Power Input Socket. Rated 10A / 250VAC. (USA 15A / 250VAC). Approved ENEC17 for all EC countries.

**MS1-A (CL1922)
MS1-AY (CL1922Y)**

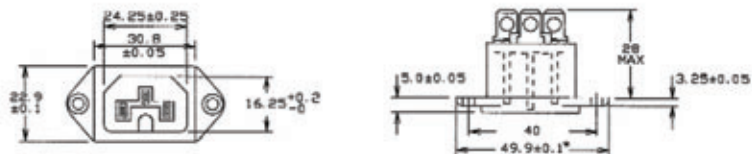


Y version has Rounded Locking Face.



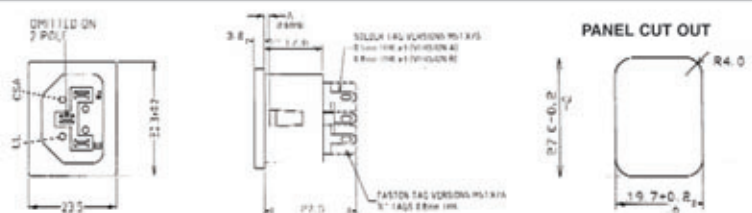
MS2-A IEC Power Input Socket 'Hot Condition'. Rated 10A / 250VAC.

MS2-A (CL1924)



MS1X/S Snap In IEC Power Input Socket. Rated 10A / 250VAC. Approved ENEC17 for all EC countries.

MS1X/S (CL19192)



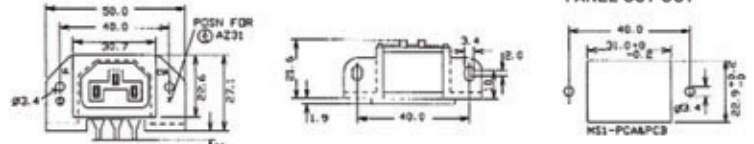
Various panel thickness options. Refer to drawings.

Drawings available on request



MS1-PCA PCB Mounting IEC Power Input Socket. Rated 10A / 250VAC. Refer to drawing for PCB layouts & variants

MS1-PCA (CL19210)

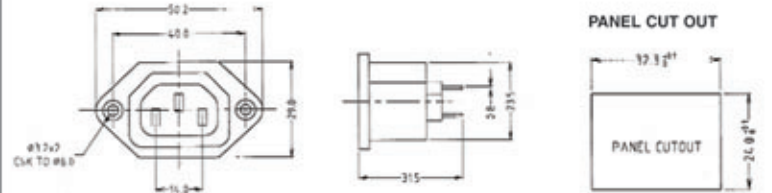


Various PCB options. Refer to drawings.



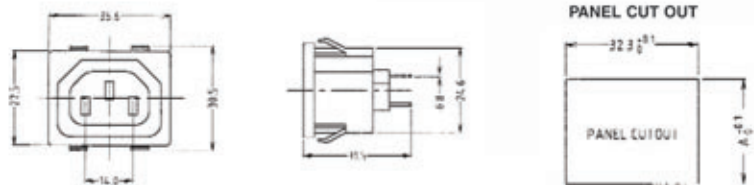
MR1-S IEC Power Output Socket. Rated 6A / 250VAC.

MR1-S (FC68138)



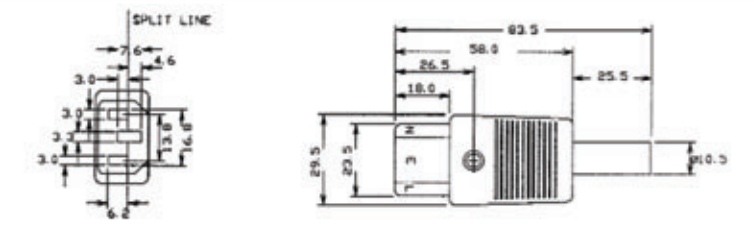
MR1-SBN Snap In IEC Power Output Socket. Rated 6A / 250VAC.

MR1-SBN (FC68139N)



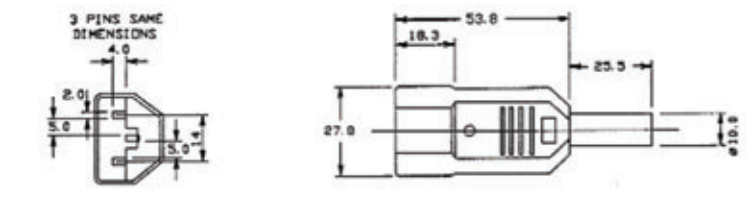
CP22S IEC Power Rewireable Output Connector. Rated 10A / 250VAC.

CP22S (CL1918)



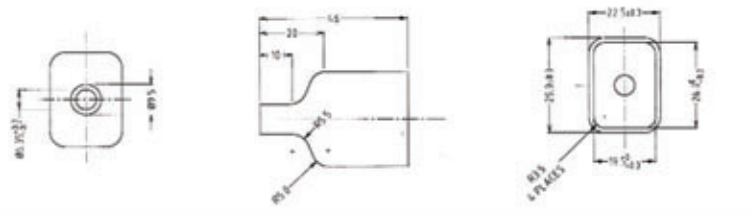
CP22R IEC Power Rewireable Input Connector. Rated 10A / 250VAC.

CP22R (CL1919)



PVC Insulating Cover for Chassis Mounting MS1 and MS2 Power Inputs and MR1-S Power Output.

PVC Cover (CL1928)



APPROVALS

SPEC TYPE	BS4491 COLD	BS4491 HOT	CE22 IEC320	CB-1	UL	CSA	SEMKO	NEMKO	DEMKO	SETI	NF	VDE	KEMA	OVE	CEBEC	S+
MSIS/MS1A	O	N	O	O	O	O	E	E	E	E	E	E	E	E	E	O
MS1XS/XA	O	N	O	O	●	●	E	E	E	E	E	E	E	E	E	O
MS1-PCA/PCB	O	N	O	O	O	O	E	E	E	E	E	E	E	E	E	O
MS2S/MS2A	O	O	O	O	O	O	O	O	O	O	O	O	O	O	O	O
MR1S	N	N	N	N	●	●	●	●	●	●	N	●	N	N	N	●
MR1SB	N	N	O	N	●	●	●	O	●	O	O	●	O	O	O	O
CP22S	O	N	O	N	O	O	O	O	O	O	O	O	O	O	O	O
CP22R	N	N	O	N	O	O	O	O	O	O	O	O	O	O	O	O

N: Not approved o: Conforms ●: Approved E: ENEC17 approved

Specification:

Rated Current: 10A maximum. (15A USA)

Rated Voltage: 250Vac max.

Temperature Rating: -10° C to + 85° C

Minimum Flammability Rating: UL 94-HB

Materials:

Housing: MS1 Polyamide UL 94HB or UL94V-0

MS2 PBT UL 94 V-0

MR1-S GFN UL 94V-0

Contacts: Brass, Niag, Alloy, Tin plated contacts for best solderability

Technical Data:

Most component parts are rated at 10A 250VAC (USA 15A 250VAC) and conform to relevant specifications EN60065, EN60-320, IEC 127, VDE 0820, UL, CSA, VDE, S, N, D, F, SEV, approved to ENEC17 for all EC countries. Please contact our sales office for copies of approval certificates when required.

