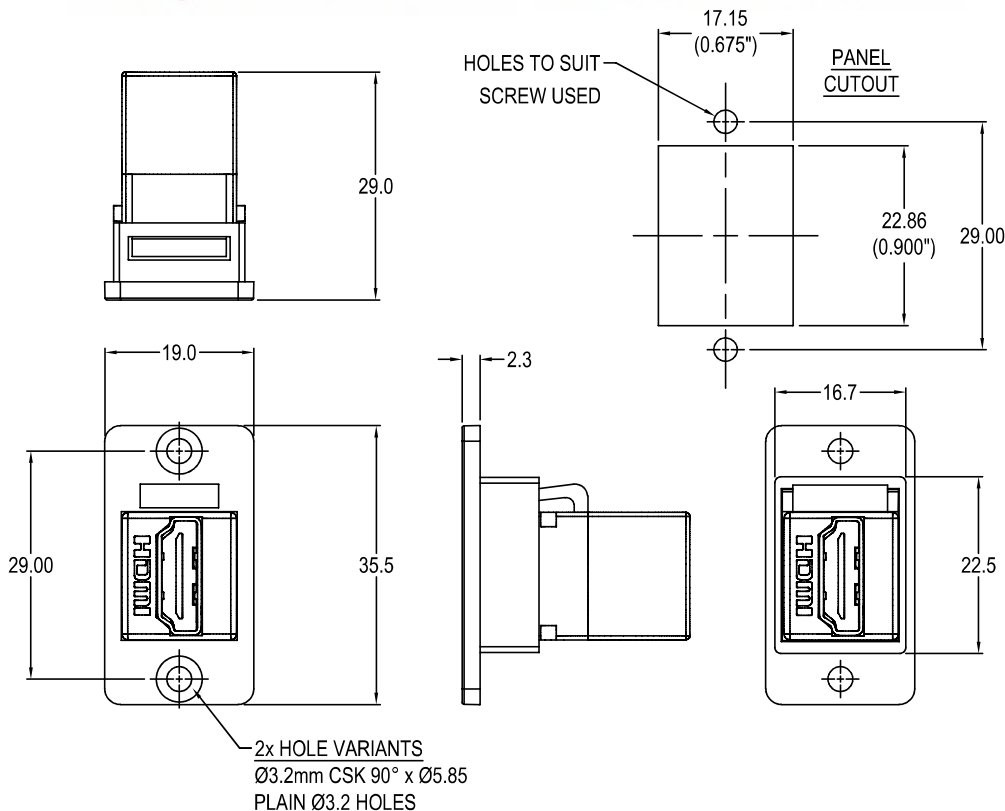




# SLIM HDMI FEMALE - FEMALE FRONT MOUNTING METAL FRAME FEEDTHROUGH



### Feedthrough Features

- Fits standard rectangular cutout.
- Various hole mounting options.
- No soldering or punch termination. Use standard cable for each connector style.
- Low rear profile.

### General:

Please note: Functionality is affected by cable quality, length and cable wiring configuration.

### VARIANTS

Part No.

- |                     |  |
|---------------------|--|
| <b>CP30600GM</b>    | SLIM FM HDMI F-F Nickel frame, CSK holes             |
| <b>CP30600GMB</b>   | SLIM FM HDMI F-F Black metal frame, CSK holes        |
| <b>CP30600GMX1</b>  | SLIM FM HDMI F-F Nickel frame, Ø3.2 PLAIN holes      |
| <b>CP30600GMBX1</b> | SLIM FM HDMI F-F Black metal frame, Ø3.2 PLAIN holes |

### Material:

1. Insert: ABS UL94 HB
2. Frame: Diecast, Nickel or Black plated
3. Shell: Gold plated
4. Contacts: Gold Plated