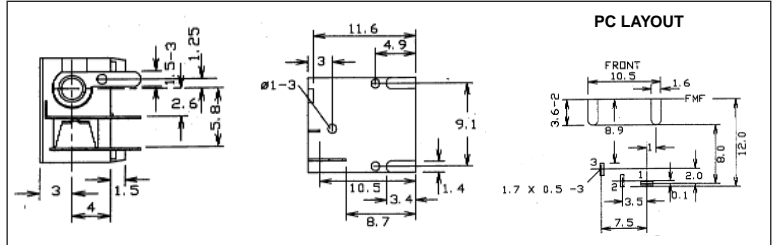


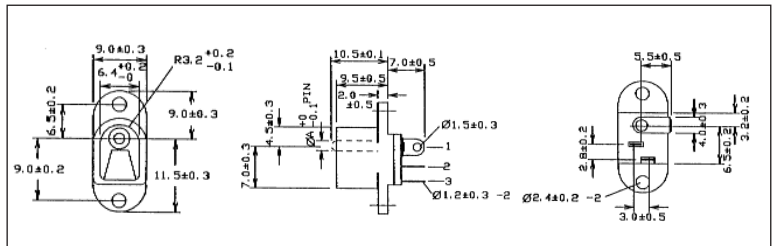


DC-12A PCB mounting pin / ring type with switch. Rated 12V / 5A. With 2.1mm dia. pin.

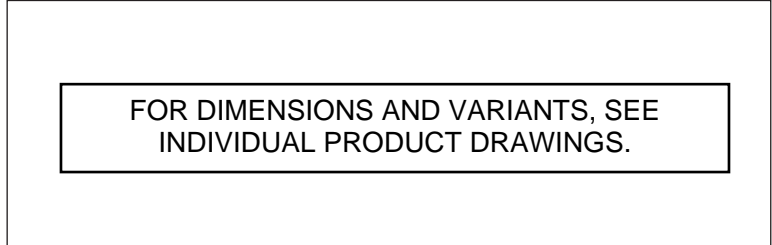
DC-12A (FC681485)



DC-13 panel mounting pin / ring type with switch. Rated 12V / 5A. DC-13A with 2.1mm dia. pin. DC-13B with 2.5mm dia. pin. DC-13A (FC681492) DC-13B (FC681493)

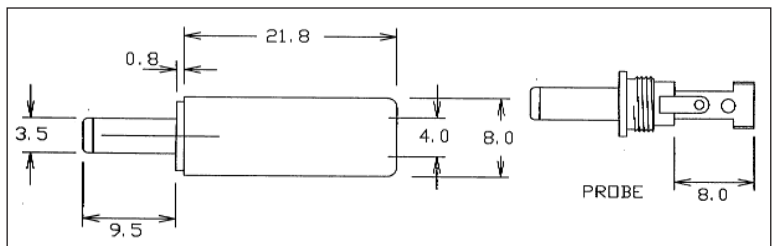


DCPP1 DC Line connector. Rated 12V / 5A. DCPP1 with 2.1mm dia. pin. DCPP2 with 2.5mm dia. pin.

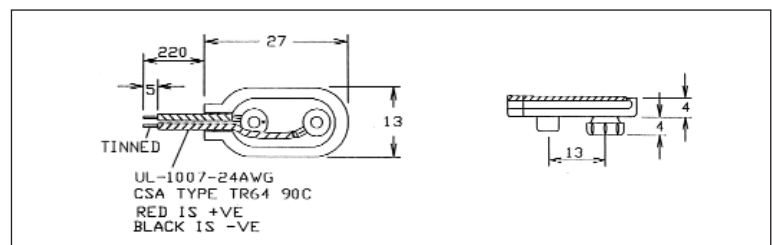


DCPP3 DC Line connector. Rated 12V / 5A. With 1.3mm dia. pin

DCPP3 (FA67555)



CCB-1 9V Battery connector. Cable length 220mm. Tough molded body. CCB-1A 'T' Type Cable length 220mm. CCB-1 (FC6830) CCB-1A (FC6831)



Please note we can also supply DC Plugs moulded onto cable as custom products.