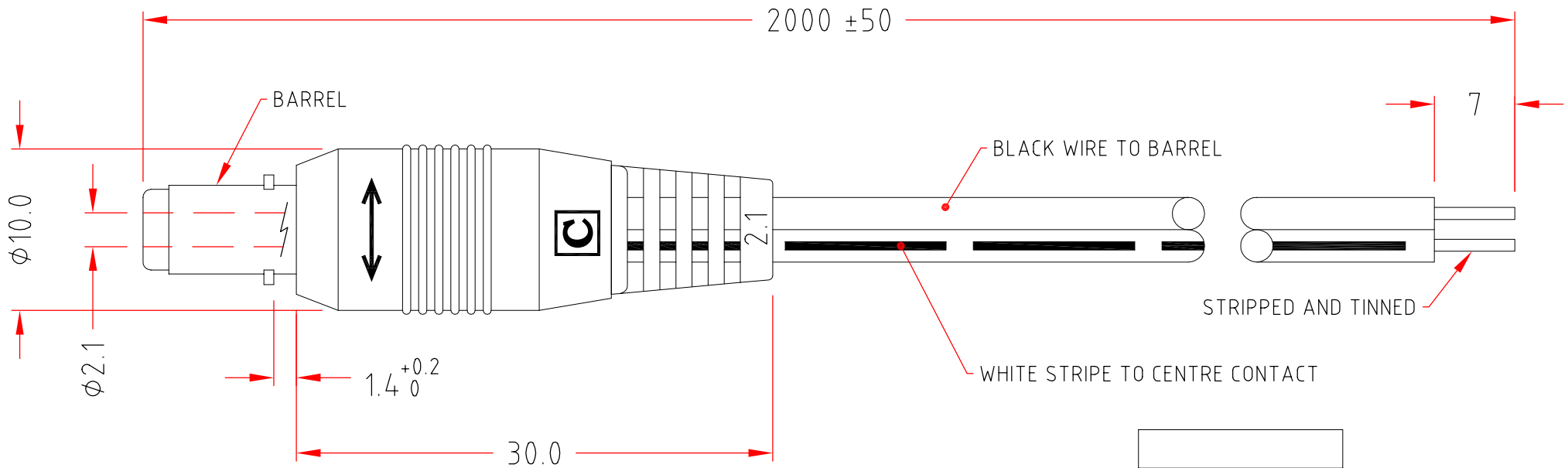
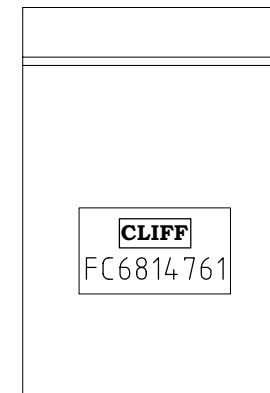


ISS.	AMEND	DATE
1	ISSUED	20/01/15



WHEN ORDERING USE CLIFF PART NUMBER: FC6814761



<b>RoHS</b> ✓ <b>COMPLIANT</b>
<b>TOLERANCE</b>
NO DEC. PLACE ±
1 DEC. PLACE ±
2 DEC. PLACE ±
HOLE Ø ±
ANGLES ±
UNLESS OTHERWISE STATED

**Cliff Electronic Components Ltd.**  
76 Holmesthorpe Avenue, Holmesthorpe Industrial Estate,  
Redhill, Surrey, RH1 2PF, England, UK  
Tel: 01737-771375 Fax: 01737-766012 Website: www.cliffuk.co.uk

DIMENSIONS IN MILLIMETERS UNLESS OTHERWISE STATED. WORK TO DIMENSIONS. REMOVE ALL BURRS. IF IN DOUBT ASK.

3rd ANGLE PROJECTION:

DO NOT SCALE

MATERIAL: PVC - 24AWG TWIN CORE RATED 300V

TITLE: 2.1mm LOCKING DC PLUG WITH 2m CABLE

FINISH: CLEAN - BLACK

THE CONTENTS OF THIS DOCUMENT MUST NOT BE COPIED OR DISCLOSED TO A 3rd PARTY WITHOUT WRITTEN PERMISSION OF CLIFF UK. © 2015

DRAWN: T.J.O.

APPROVED: D.P.J.

DRWG. No. **FC6814761DST**

FORM: A4DRWGH